

Bestellungen an / Orders to:

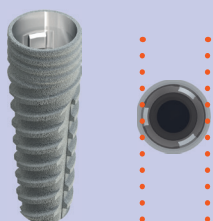
HumanTech Dental GmbH
 Gewerbestr. 5
 D-71144 Steinenbronn / Germany
 Phone: +49 (0) 7157/5246-71
 Fax: +49 (0) 7157/5246-66
 Email: sales@humantech-dental.de
 Web: www.humantech-dental.de

RatioPlant®ConeCept
 Bestellformular / Order form

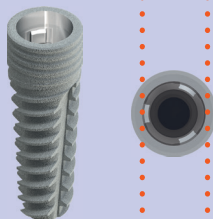


Evaluation special price

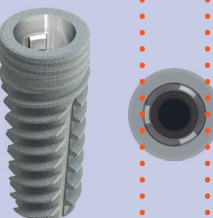
3.3



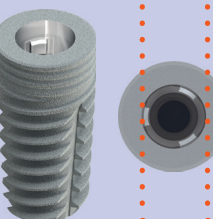
3.8



4.2



5.0



Art.Nr. / Art.No.	Beschreibung / Description	Preis / price	Stk. / pcs.
5005133080	Implant ConeCept 33-080	0,-	<input type="text"/>
5005133100	Implant ConeCept 33-100	0,-	<input type="text"/>
5005133115	Implant ConeCept 33-115	0,-	<input type="text"/>
5005133130	Implant ConeCept 33-130	0,-	<input type="text"/>
5005138080	Implant ConeCept 38-080	0,-	<input type="text"/>
5005138100	Implant ConeCept 38-100	0,-	<input type="text"/>
5005138115	Implant ConeCept 38-115	0,-	<input type="text"/>
5005138130	Implant ConeCept 38-130	0,-	<input type="text"/>
5005142060	Implant ConeCept 42-060	0,-	<input type="text"/>
5005142080	Implant ConeCept 42-080	0,-	<input type="text"/>
5005142100	Implant ConeCept 42-100	0,-	<input type="text"/>
5005142115	Implant ConeCept 42-115	0,-	<input type="text"/>
5005142130	Implant ConeCept 42-130	0,-	<input type="text"/>
5005150060	Implant ConeCept 50-060	0,-	<input type="text"/>
5005150080	Implant ConeCept 50-080	0,-	<input type="text"/>
5005150100	Implant ConeCept 50-100	0,-	<input type="text"/>
5005150115	Implant ConeCept 50-115	0,-	<input type="text"/>
5005150130	Implant ConeCept 50-130	0,-	<input type="text"/>
5011106080	Healing Cap ConeCept Mini H 1.5 mm a	0,-	<input type="text"/>
5011106081	Healing Cap ConeCept Mini H 3 mm a	0,-	<input type="text"/>
5011106082	Healing Cap ConeCept Mini H 5 mm a	0,-	<input type="text"/>
5011106083	Healing Cap ConeCept S H 1.5 mm a	0,-	<input type="text"/>
5011106084	Healing Cap ConeCept S H 3 mm a	0,-	<input type="text"/>
5011106085	Healing Cap ConeCept S H 5 mm a	0,-	<input type="text"/>
5011106086	Healing Cap ConeCept L H 1.5 mm a	0,-	<input type="text"/>
5011106087	Healing Cap ConeCept L H 3 mm a	0,-	<input type="text"/>
5011106088	Healing Cap ConeCept L H 5 mm a	0,-	<input type="text"/>

Besteller/Purchaser

Preise nur für registrierte Patienten im Rahmen der ConeCept Produkt-Evaluationsreihe gültig!
 Prices above only valid for registered patients within the ConeCept product evaluation!

Bestellungen an / Orders to:

HumanTech Dental GmbH
 Gewerbestr. 5
 D-71144 Steinenbronn / Germany
 Phone: +49 (0) 7157/5246-71
 Fax: +49 (0) 7157/5246-66
 Email: sales@humantech-dental.de
 Web: www.humantech-dental.de

RatioPlant®ConeCept
 Bestellformular / Order form



Evaluation special price



Art.Nr. / Art.No.	Beschreibung / Description	Preis / price	Stk. / pcs.
5011109013	lab screw ConeCept	0,-	<input type="text"/>
5011109001	prosthetic screw normal	0,-	<input type="text"/>
5011110008	Lab Analog ConeCept	0,-	<input type="text"/>
5011105066	Impression Post Open ConeCept M a	0,-	<input type="text"/>
5011105067	Impression Post Open ConeCept S a	0,-	<input type="text"/>
5011105068	Impression Post Open ConeCept L a	0,-	<input type="text"/>
5011105069	Impression Post Closed ConeCept M a	0,-	<input type="text"/>
5011105070	Impression Post Closed ConeCept S a	0,-	<input type="text"/>
5011105071	Impression Post Closed ConeCept L a	0,-	<input type="text"/>
5011105010	Transfer Cap ConeCept	0,-	<input type="text"/>
5011210015	Plastic Abutment ConeCept	0,-	<input type="text"/>
5011210016	Plastic Abutment ConeCept lock	0,-	<input type="text"/>
5011610105	Provisional Abutment Peek ConeCept	0,-	<input type="text"/>
5011110105	Provisional Abutment Ti ConeCept	0,-	<input type="text"/>
5011610001	Scan Connector ConeCept incl. Prosthetic Screw normal	0,-	<input type="text"/>
5011110590	Abutment Ti ConeCept CAD CAM	0,-	<input type="text"/>
5011110065	Ti Adhesive Abutment ConeCept Mini	0,-	<input type="text"/>
5011110066	Ti Adhesive Abutment ConeCept S	0,-	<input type="text"/>
5011110067	Ti Adhesive Abutment ConeCept L	0,-	<input type="text"/>

Besteller/Purchaser

Alle Aufbauten werden inkl. einer Prosthetic Screw normal geliefert!
 All abutments were delivered incl. Prosthetic Screw normal!

Preise nur für registrierte Patienten im Rahmen der ConeCept
 Produkt-Evaluationsreihe gültig!
 Prices above only valid for registered patients within the
 ConeCept product evaluation!

Bestellungen an / Orders to:

HumanTech Dental GmbH
 Gewerbestr. 5
 D-71144 Steinenbronn / Germany
 Phone: +49 (0) 7157/5246-71
 Fax: +49 (0) 7157/5246-66
 Email: sales@humantech-dental.de
 Web: www.humantech-dental.de

RatioPlant®ConeCept
 Bestellformular / Order form



Evaluation special price

	H1.5	H3	H5	Art.Nr. / Art.No.	Beschreibung / Description	Preis / price	Stk. / pcs.
0°				5011110500	Ti Abutment ConeCept 0° Mini H1,5	0,-	<input type="text"/>
				5011110501	Ti Abutment ConeCept 0° Mini H3	0,-	<input type="text"/>
				5011110502	Ti Abutment ConeCept 0° Mini H5	0,-	<input type="text"/>
15°				5011110510	Ti Abutment ConeCept 15° Mini H1,5	0,-	<input type="text"/>
				5011110511	Ti Abutment ConeCept 15° Mini H3	0,-	<input type="text"/>
				5011110512	Ti Abutment ConeCept 15° Mini H5	0,-	<input type="text"/>
25°				5011110520	Ti Abutment ConeCept 25° Mini H1,5	0,-	<input type="text"/>
				5011110521	Ti Abutment ConeCept 25° Mini H3	0,-	<input type="text"/>
				5011110522	Ti Abutment ConeCept 25° Mini H5	0,-	<input type="text"/>
0°				5011110530	Ti Abutment ConeCept 0° S H1,5	0,-	<input type="text"/>
				5011110531	Ti Abutment ConeCept 0° S H3	0,-	<input type="text"/>
				5011110532	Ti Abutment ConeCept 0° S H5	0,-	<input type="text"/>
15°				5011110540	Ti Abutment ConeCept 15° S H1,5	0,-	<input type="text"/>
				5011110541	Ti Abutment ConeCept 15° S H3	0,-	<input type="text"/>
				5011110542	Ti Abutment ConeCept 15° S H5	0,-	<input type="text"/>
25°				5011110550	Ti Abutment ConeCept 25° S H1,5	0,-	<input type="text"/>
				5011110551	Ti Abutment ConeCept 25° S H3	0,-	<input type="text"/>
				5011110552	Ti Abutment ConeCept 25° S H5	0,-	<input type="text"/>
0°				5011110560	Ti Abutment ConeCept 0° L H1,5	0,-	<input type="text"/>
				5011110561	Ti Abutment ConeCept 0° L H3	0,-	<input type="text"/>
				5011110562	Ti Abutment ConeCept 0° L H5	0,-	<input type="text"/>
15°				5011110570	Ti Abutment ConeCept 15° L H1,5	0,-	<input type="text"/>
				5011110571	Ti Abutment ConeCept 15° L H3	0,-	<input type="text"/>
				5011110572	Ti Abutment ConeCept 15° L H5	0,-	<input type="text"/>
25°				5011110580	Ti Abutment ConeCept 25° L H1,5	0,-	<input type="text"/>
				5011110581	Ti Abutment ConeCept 25° L H3	0,-	<input type="text"/>
				5011110582	Ti Abutment ConeCept 25° L H5	0,-	<input type="text"/>

Besteller/Purchaser

Alle Aufbauten werden inkl. einer Prosthetic Screw normal geliefert!
 All abutments were delivered incl. Prosthetic Screw normal!

Preise nur für registrierte Patienten im Rahmen der ConeCept
 Produkt-Evaluationsreihe gültig!
 Prices above only valid for registered patients within the
 ConeCept product evaluation!

Bestellungen an / Orders to:

HumanTech Dental GmbH
 Gewerbestr. 5
 D-71144 Steinenbronn / Germany
 Phone: +49 (0) 7157/5246-71
 Fax: +49 (0) 7157/5246-66
 Email: sales@humantech-dental.de
 Web: www.humantech-dental.de

RatioPlant® ConeCept
 Bestellformular / Order form



Evaluation special price



Art.Nr. / Art.No.	Beschreibung / Description	Preis / price	Stk. / pcs.
5011110600	EQUATOR-Abutment Kit ConeCept (1 metal casing, 4 plastic caps with different retention, 1 distance plate, 1 EQUATOR implant abutment ConeCept) EQUATOR Abutment ConeCept H1	0,-	<input type="text"/>
5011110601	EQUATOR Abutment ConeCept H2	0,-	<input type="text"/>
5011110602	EQUATOR Abutment ConeCept H3	0,-	<input type="text"/>
5011110603	EQUATOR Abutment ConeCept H4	0,-	<input type="text"/>
5011110604	EQUATOR Abutment ConeCept H5	0,-	<input type="text"/>
5011110605	EQUATOR Abutment ConeCept H6	0,-	<input type="text"/>
5011110606	EQUATOR Abutment ConeCept H7	0,-	<input type="text"/>
5011008024	Caps Assortment Kit (1x metal casing, 1x laboratory cap, retention caps - 1x extra-soft, 1soft, 1 standard, 1 strong)	0,-	<input type="text"/>
5011008072	Smart Box Kit EQUATOR (1x metal casing with black laboratory cap, 1 distance plate, retention caps - 1x each of extra-soft, 1 soft, 1 standard, 1 strong)	0,-	<input type="text"/>
5011008026	Retention Caps EQUATOR (4 pcs. per colour) violett „STRONG“	0,-	<input type="text"/>
5011008027	white „STANDARD“	0,-	<input type="text"/>
5011008028	pink „SOFT“	0,-	<input type="text"/>
5011008029	yellow „EXTRA -SOFT“	0,-	<input type="text"/>
5011008031	4 PROCESSING CAP LABORATORY	0,-	<input type="text"/>
5011008025	2 STAINLESS STEEL HOUSING	0,-	<input type="text"/>
5011008030	2 IMPRESSION COPING	0,-	<input type="text"/>
5011008032	2 LABORTORY ANALOG	0,-	<input type="text"/>

Besteller/Purchaser

Preise nur für registrierte Patienten im Rahmen der ConeCept Produkt-Evaluationsreihe gültig!
 Prices above only valid for registered patients within the ConeCept product evaluation!

*EQUATOR® ist ein eingetragenes Warenzeichen von RHEIN83 SRL, Italien
 *EQUATOR® is a registered trademark of RHEIN83 SRL, Italy

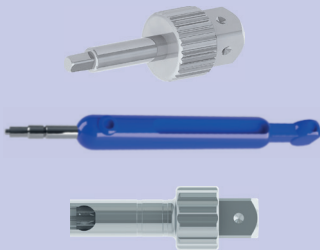
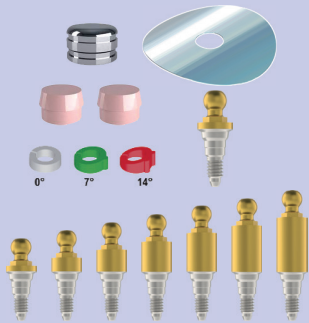
Bestellungen an / Orders to:

HumanTech Dental GmbH
 Gewerbestr. 5
 D-71144 Steinenbronn / Germany
 Phone: +49 (0) 7157/5246-71
 Fax: +49 (0) 7157/5246-66
 Email: sales@humantech-dental.de
 Web: www.humantech-dental.de

RatioPlant® ConeCept
 Bestellformular / Order form



Evaluation special price



Art.Nr. / Art.No.	Beschreibung / Description	Preis / price	Stk. / pcs.
SPHERO-Abutment Kit ConeCept (1 metal housing, 2 plastic caps pink-soft, 3 alignment rings, 1 distance plate, 1x SPHERO BLOCK implant abutment ConeCept)			
5011110610	SPHERO Abutment ConeCept H1	0,-	<input type="text"/>
5011110611	SPHERO Abutment ConeCept H2	0,-	<input type="text"/>
5011110612	SPHERO Abutment ConeCept H3	0,-	<input type="text"/>
5011110613	SPHERO Abutment ConeCept H4	0,-	<input type="text"/>
5011110614	SPHERO Abutment ConeCept H5	0,-	<input type="text"/>
5011110615	SPHERO Abutment ConeCept H6	0,-	<input type="text"/>
5011110616	SPHERO Abutment ConeCept H7	0,-	<input type="text"/>
SPHERO RETENTIVE CAP (6 pcs. per colour)			
5011008062	silver „EXTRA -RESILIENT“ SOFT RETENTION	0,-	<input type="text"/>
5011008063	gold „EXTRA -RESILIENT“ MEDIUM RETENTION	0,-	<input type="text"/>
5011008064	green „VERY ELASTIC RETENTION“	0,-	<input type="text"/>
5011008065	yellow „EXTRA SOFT“	0,-	<input type="text"/>
5011008066	pink „SOFT“	0,-	<input type="text"/>
5011008067	clear „STANDARD“	0,-	<input type="text"/>
5011008060	EQUATOR inserter	0,-	<input type="text"/>
5011008041	Tool x Inserting Caps Standard	0,-	<input type="text"/>
5011008061	Ball attachment inserter	0,-	<input type="text"/>

Besteller/Purchaser

Preise nur für registrierte Patienten im Rahmen der ConeCept Produkt-Evaluationsreihe gültig!
 Prices above only valid for registered patients within the ConeCept product evaluation!

*SPHERO® ist ein eingetragenes Warenzeichen von RHEIN83 SRL, Italien
 *SPHERO® is a registered trademark of RHEIN83 SRL, Italy

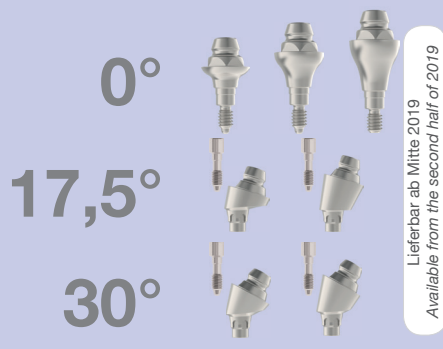
Bestellungen an / Orders to:

HumanTech Dental GmbH
 Gewerbestr. 5
 D-71144 Steinenbronn / Germany
 Phone: +49 (0) 7157/5246-71
 Fax: +49 (0) 7157/5246-66
 Email: sales@humantech-dental.de
 Web: www.humantech-dental.de

RatioPlant®ConeCept
 Bestellformular / Order form



Evaluation special price



Art.Nr. / Art.No.	Beschreibung/Description	Preis / price	Stk. / pcs.
5011110428	MU Abutment ConeCept 0° H1,5	0,-	<input type="text"/>
5011110429	MU Abutment ConeCept 0° H3	0,-	<input type="text"/>
5011110434	MU Abutment ConeCept 0° H5	0,-	<input type="text"/>
5011110430	MU Abutment ConeCept 17,5° H3	0,-	<input type="text"/>
5011110431	MU Abutment ConeCept 17,5° H4	0,-	<input type="text"/>
5011110432	MU Abutment ConeCept 30° H4	0,-	<input type="text"/>
5011110433	MU Abutment ConeCept 30° H5	0,-	<input type="text"/>
5012302022	MU abutment inserter	0,-	<input type="text"/>
5011106100	MUA healing cap H1 incl. MU prosthetic screw	0,-	<input type="text"/>
5011106101	MUA healing cap H2 incl. MU prosthetic screw	0,-	<input type="text"/>
5011110013	MUA impression post open tray	0,-	<input type="text"/>
5011110014	MUA impression post closed tray	0,-	<input type="text"/>
5011610000	MUA scan connector PEEK incl. MU prosthetic screw	0,-	<input type="text"/>
5011110004	MUA lab analog	0,-	<input type="text"/>
5011110012	MU prosthetic cap T1 incl. MU prosthetic screw	0,-	<input type="text"/>
5011210020	MU prosthetic cap plastic incl. MU prosthetic screw	0,-	<input type="text"/>
5012302020	MU 0 inserter ratchet	0,-	<input type="text"/>

Besteller/Purchaser

Alle Aufbauten werden inkl. einer Prosthetic Screw normal geliefert!
All abutments were delivered incl. Prosthetic Screw normal!

Preise nur für registrierte Patienten im Rahmen der ConeCept
 Produkt-Evaluationsreihe gültig!
*Prices above only valid for registered patients within the
 ConeCept product evaluation!*